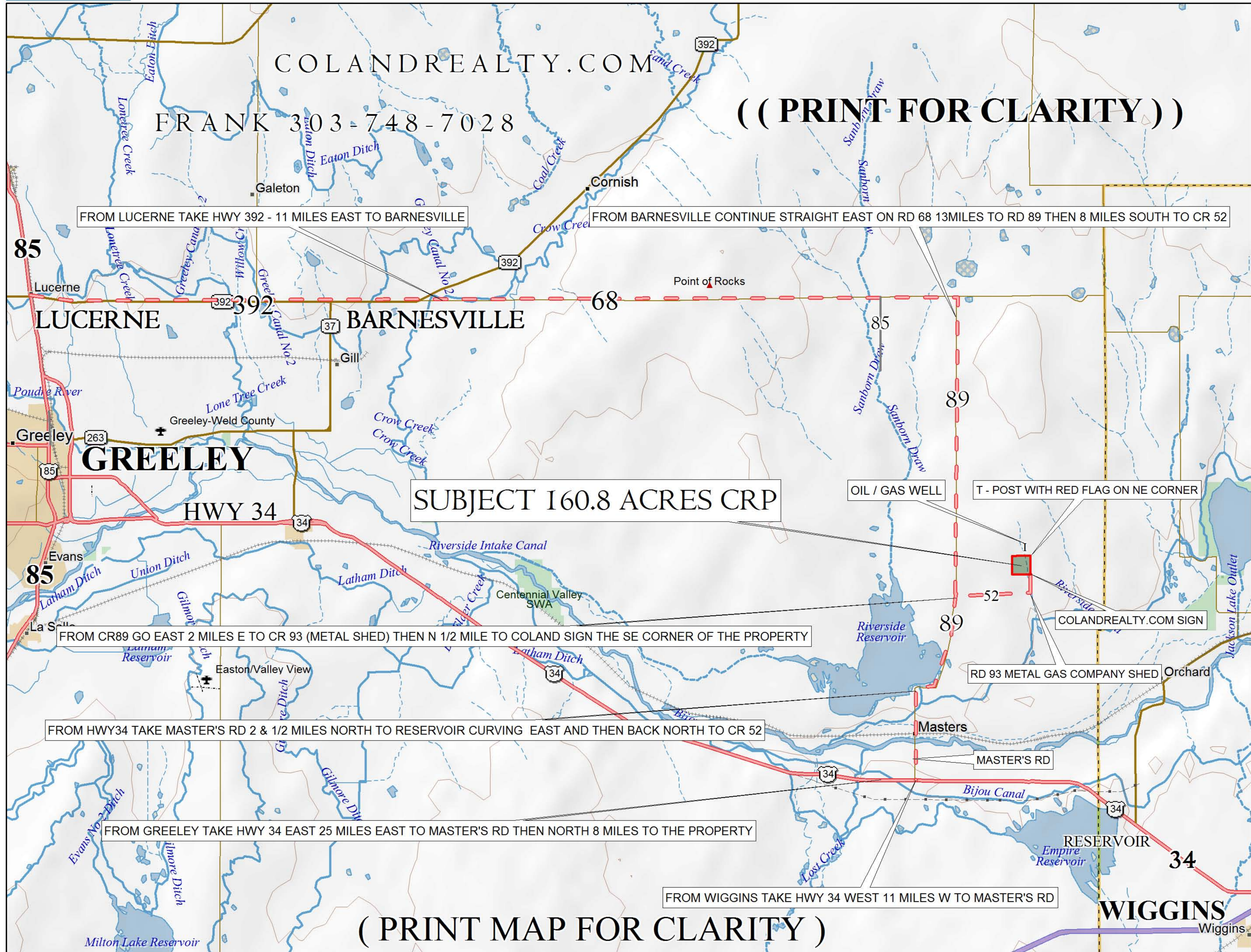


COLANDREALTY.COM

FRANK 303-748-7028

(( PRINT FOR CLARITY ))



FROM LUCERNE TAKE HWY 392 - 11 MILES EAST TO BARNESVILLE

FROM BARNESVILLE CONTINUE STRAIGHT EAST ON RD 68 13MILES TO RD 89 THEN 8 MILES SOUTH TO CR 52

SUBJECT 160.8 ACRES CRP

OIL / GAS WELL

T - POST WITH RED FLAG ON NE CORNER

COLANDREALTY.COM SIGN

RD 93 METAL GAS COMPANY SHED

FROM CR89 GO EAST 2 MILES E TO CR 93 (METAL SHED) THEN N 1/2 MILE TO COLAND SIGN THE SE CORNER OF THE PROPERTY

FROM HWY34 TAKE MASTER'S RD 2 & 1/2 MILES NORTH TO RESERVOIR CURVING EAST AND THEN BACK NORTH TO CR 52

FROM GREELEY TAKE HWY 34 EAST 25 MILES EAST TO MASTER'S RD THEN NORTH 8 MILES TO THE PROPERTY

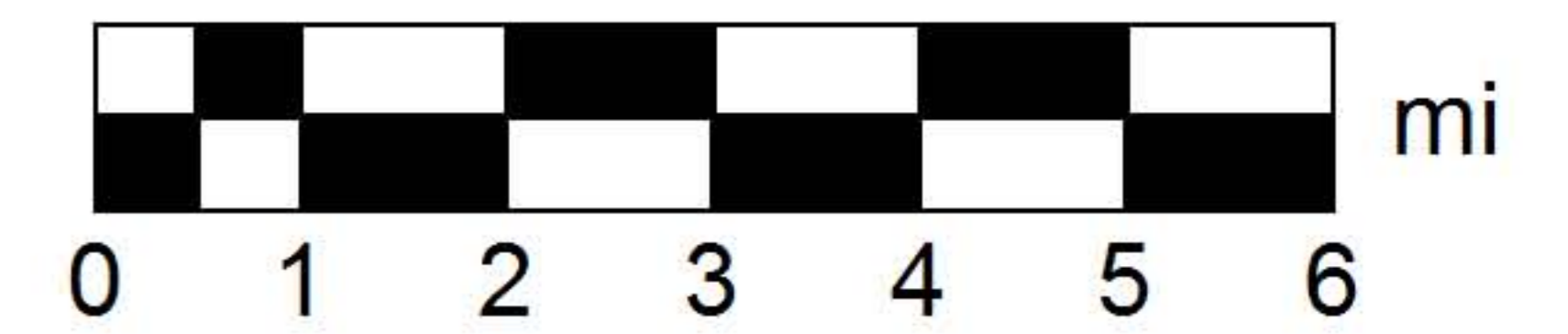
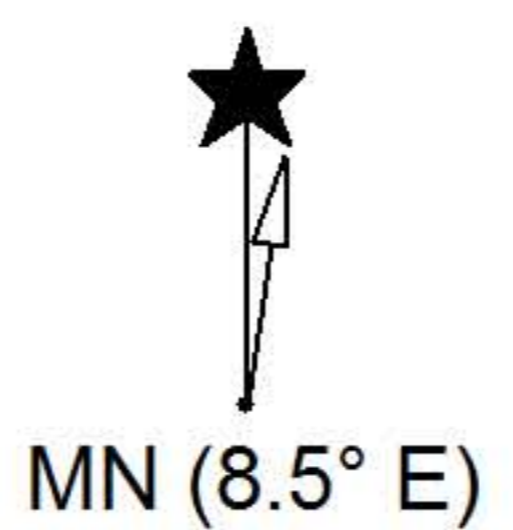
FROM WIGGINS TAKE HWY 34 WEST 11 MILES W TO MASTER'S RD

(( PRINT MAP FOR CLARITY ))

Data use subject to license.

© DeLorme. XMap® 7.

www.delorme.com



Data Zoom 9-7